

Instructions

To avoid any disturbance, please read the following instructions.

1. The Plastic-Shear cuts any kind of synthetic resin, laminated plastic materials, electric insulation material, floor coverings Asbestos-Hardfibre-Press-Chalk- and Card-Boards, Hornitex, PVC, Formica, Resopal, Inlaid, Linoleum and a great deal of similar materials dust-fuss and -splinter free up to 5 mm (³/₁₆") in thickness.

2. No adjustments necessary for cutting various thicknesses.

3. If cutting sheet-material, the side angle guide (No. 13100) must be removed, by loosening two wing screws (No. 13200).

4. Never remove top angle guide (No. 13000).

5. With the side angle guide (No. 13100) assembled to the shear, projecting edges of glued on Formica, Veneer, Hardboard etc., can be perfectly cut off flush without splintering. Very important is, that the side angle guide (No. 13100) is assembled in the manner, that the knife while cutting doesn't cut into the wood plate, otherwise the laminated plastic surface will break.

Environmental protection



Recycling raw materials instead of waste disposal

Machine, accessories and packaging should be sorted for environment-friendly recycling. These instructions are printed on recycling paper manufactured without chlorine.

Care and Maintenance



Before repairing or any maintenance on machine, disconnect from power supply by removing plug from socket.

Always keep the machine and the ventilation slots clean.

Oil the knife pin **18** and knife **11** at regular intervals.

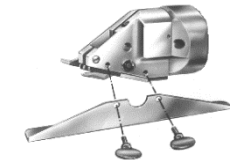
If the machine should happen to fail, despite the care taken in manufacture and testing, repair should be carried out by an authorized customer services agent for Dräco power tools.

Declaration of conformity

We declare under our sole responsibility that this product is in conformity with the following standards.

EC 98/37, EC 93/ 68 EWG, EC 04/108 EC und Normen DIN EN ISO 12100-1 , DIN EN ISO 12100-2 , EN 50 144, EN 55 014, CISPR 14-1, CISPR 14-2, IEC61000-3-2, IEC61000-3-3, IEC 60745-1, IEC 60745-2, entspricht.

CE 09 Susanne Draenert



side angle guide No. 13100

6. While cutting, hold the shear upright, do not tilt or cant, so that the cutting jaws and the top angle guide (No. 13000) glides along the surface of the sheet.



7. Both knife and jaws can be resharpened. After being resharpened or replaced, the knife, at it's lowest point should protrude the jaws by approximately 3,5 mm (⁵/₃₂'). The knife should have approximately 0,1 mm (0,01 ") play on both side of the jaws, centering the cutter with spacing-shims (No. BG12400) supplied.

8. The shear is of unit construction, making the replacement of spare parts easy. Maintenance

9. Maintenance

Lubrication between knife (01002) and knife pin (12500) once a week with a few drops of oil.

10. Special accessory

For cutting strips 10-500 mm (³/_a-20") we supply as an optional an adjustable guide.

This guide can be supplied in lengths of 100 mm (4"), 250 mm (10") and 500 mm (20").

A metal box measurement 400 x 200 x 90 mm (16" x 8" x 3 1/2") is available for safe storage.

Guarantee

Dräco tools carry a guarantee of 12 months from the date of delivery.

Damage attributable to normal wear and tear, overload or improper handling will be excluded from the guarantee.

In case of complaint please, send the machine, **undismantled**, to your dealer or the Dräco Service Centre for electric power tools.



Operating Instructions for the Plastic - Shear S1002N-1

To avoid any disturbance, please read the following instructions:

For your safety:



1 Safe operation of this machine is possible, only, when the operating instructions and the safety precautions are read completely and the instructions contained therein are strictly observed.

2 The machine must not be used in damp locations or in wet environment.

3 Always inspect cable and plug before using machine. Have damage repaired by a qualified professional, only. Put the plug into the main socket only, when the machine is in off position.

4+5 Always wear protective goggles, protective gloves and heavy-duty shoes when working.

- Do not carry the machine by the cable.
- Always remove the plug from the power supply socket before carrying out any work on the machine, when interrupting work and when not using the machine.
- Always place the cable to the rear, away from the machine.
- Apply the machine to the plastic sheet, when switched on, only.
- Always provide for secure footing when working.
- Firmly clamp the work piece, if it dose not remain stationary from its own weight.
- The knife should not rub on the jaws: Possible danger of cutting tool breakage.
- Do not exceed the maximum allowable material thickness.



For further notes on safety we refer to enclosed red safety instructions sheet

Technical Data:

DRÄCO Plastic Shear		S1002N-1	S1002N-1	
max. cutting sapacity	Art.no.	61310-1	spare parts	
Board etc.	mm/ga	5,0	knife	01002
PVC, ABS, PP, etc.	mm/ga	3,0	set of jaws	BG20600
Polyester, GFK, Formica, etc.	mm/ga	2,0	knife-pin set	BG12555
			Optional accessories	
tightest radiuns	mm/"	175	metal-box	18000
working speed	m/min	6	adjustable guide S/02	up to 100 mm 20062
strokes	min ⁻¹	3000	adjustable guide S/02	up to 250 mm 20063
Motor capacity	Watts	300	adjustable guide S/02	up to 500 mm 20064
weight	kg	1,6	set of blocks for corrugated plastics	BG20065

Max Draenert GmbH & Co.KG Electric - Cordless - Pneumatic Tools - Machines Germany

Factory I : Administration
Production

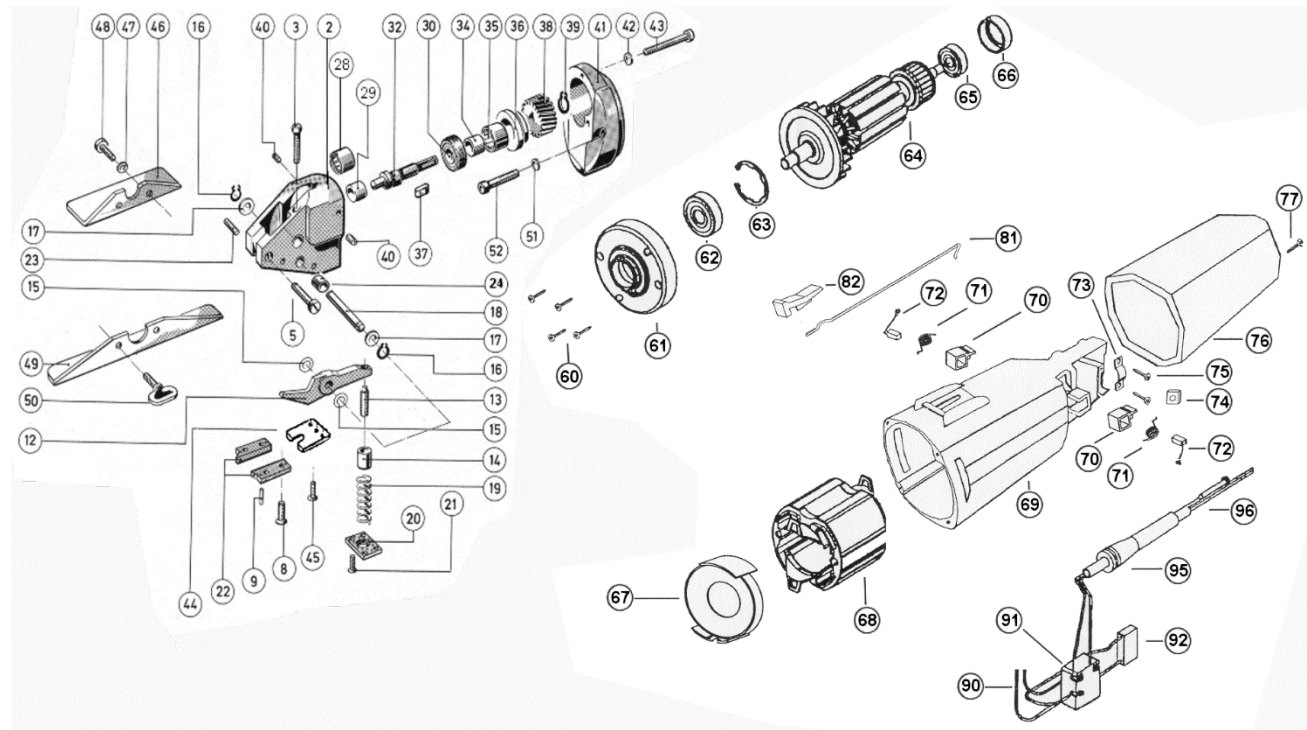
D-73777 Deizisau
D-73779 Deizisau

P.O.Box 1120
Gutenbergstreet 15-17
Tel. 07153-8217-0
Fax 07153-8217-66

Internet <http://www.dracotools.com>

E-mail: draenert@dracotools.com

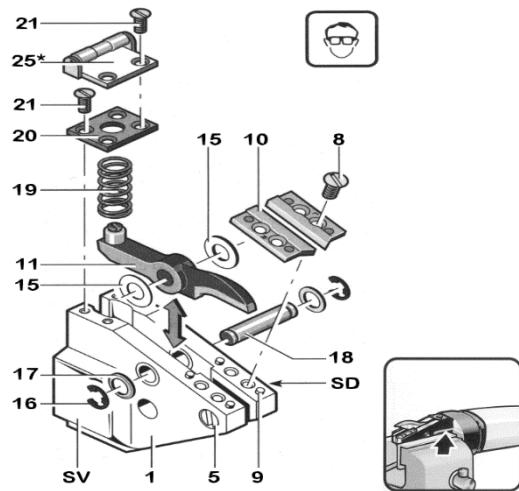
Spare parts for DRÄCO Plastic Shear S1002N-1



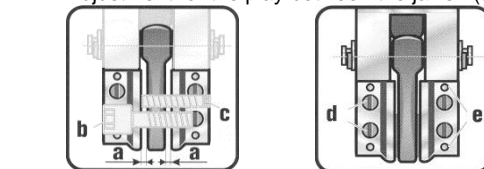
SERVICE TIPS

Before repairing the machine disconnect from power supply by removing plug from socket. Wear protective glasses!

- One drop of oil between knife (11) and head-casting (1) keeps the spacing shims (15) in place.
- Dismantle spring cover (20) and take spring out (19).
- Take circlip (16) and washer (17) off.
- Push knife pin (18) out of casting.
- Take knife out of housing
- ⚠ Attention, do not exchange the spacing shims (15).
- Place the knife inside the housing, feed shims in one side and push knife pin (18) into housing up to the middle of the knife.
- Feed the shims in on the other side of the knife.
- Push knife pin in completely, and secure washer (17) and circlip (16) again.
- Assemble spring (19) and spring cover (20).
- Between the knife (11) and the jaws (10) should be some distance, approximately 0,1 mm on each side. Knife (11) must be placed tight in the head casting.
- Adjustment for the play between the jaws. (a): 0,1 - 0,15 mm.



*optional SV=plain for vice SD=thread



- If knife has contact with the jaws on both sides, adjust with screws in the head casting. Loosen screw b, turn adjustment screw c clockwise. If a burr is on the material, adjust the space between the knife and the jaws. Loosen screw b, turn adjustment screw c anti-clockwise, tighten screw b again.

*Position numbers used are valid
← for exploded view (knife mounting) only.*

Spare parts for DRÄCO Plastic Shear S1002N-1

Pos. No.	Order No.	Description	Pcs.	Pos. No.	Order No.	Description	Pcs.
2-52	BG10962	Shear Head S1002N-1 cpl. without motor	1	42	81249	Securing washer	3
2	BG10960	Head casting (S1002N-1)	1	43	81012	Flat fillister head screw	3
3	881019	Hex socket screw	1	51	81243	Securing washer	2
5	81272	Flat fillister head screw	1	52	81181	Hex socket screw	2
8	81286	Flat head screw	4	60-96	16060	Motor cpl. 115 V USA/CDN	1
9	81248	Pin	4	60-96	16000	Motor cpl. 230 V (VDE)	1
		Knife for S1002N-1 (cutting width: 4 mm)		60-96	16000 CH	Motor cpl. 230 V (CH)	1
12	01002	Knife 1002 standard	1	60-96	16000 I	Motor cpl. 230 V (I)	1
22	BG20600	Jaws for S1002N-1 SET Pos.8, 9, 22	1	60	16013	PT-screw	4
				61	16015	Bearing end plate	1
13+14	35566	Knife lock ring with adjusting screw	1	62	10038	Ball bearing	1
				63	16014	Circlip	1
15	BG12400	Spacing shims	1	64	16096	Armature 115 V	1
16	81275	Circlip	1	64	16009	Armature 230 V	1
17	81072	Washer	1	65	10040	Ball bearing	1
18	12500	Knife pin	2	66	16029	Insulating ring	1
15-18	BG12555	Knife pin set Pos. 15-18	2	67	16030	Ventilation cover	1
19	12200	Spring	1	68	16007	Field 230 V	1
19-21	BG12300	Spring cover Pos. 19-21	1	68	16098	Field 115 V	1
20	12300	Spring cover	1	69	16039	Housing	1
21	81285	Flat head screw	1	70-71	BG16035	Brush holder and spring	2
23	81484	Tap screw	1	72	16002	Carbon brush	2
24	17900	Knife pin bushing Ø 10 mm	1	73	16021	Cable collar	1
24	17911	Knife pin bushing Ø 11 mm (oversize for repair)	4	74	16019	Hex. nut	1
29	BG27200	Gear cpl. Pos. 29-39	1	75	16020	Screw	2
28	10300	Needle bearing	1	76	16036	Switch cover	1
29	10005	Sleeve	1	77	16018	Screw	1
30	10200	Ball bearing	1	81	16032	Switch connection lever	1
32	10004	Eccentric shaft	1	82	16033	Switch knob	1
34	10005	Sleeve	1	90	16017	Connection wire	2
35	10300	Needle bearing	1	91	16031	Switch	1
35-36	BG10450	Cap for needle bearing Pos. 35-36	1	92	16005	Condensator	1
37	10006	Key	1	95	16022	Rubber-Sleeve	1
38	10007	Gear	1	96	32046	Cable with plug Europe (VDE)	1
39	10009	Circlip	1	96	20260	Cable with plug CH (SEV)	1
				96	20250	Cable with plug IT	1
41	10010	Gear case	1	96	20242	Cable with plug USA/CDN	1
						Accessories	
					10059	Adjustable guide S/01 100 mm	
					10060	Adjustable guide S/01 250 mm	
					10061	Adjustable guide S/01 500 mm	
					18000	Metal Box	

Specifications are subject to change for improvement without prior notice. When ordering spares, please mention order number and voltage.

Max Draenert GmbH & Co.KG Electric - Cordless - Pneumatic Tools - Machines Germany

Factory I : Administration
Production

D-73777 Deizisau
D-73779 Deizisau

P.O.Box 1120 Tel. 07153-8217-0
Gutenbergstreet 15-17 Fax 07153-8217-66

Internet <http://www.dracotools.com>

E-mail: draenert@dracotools.com

Dealer address: