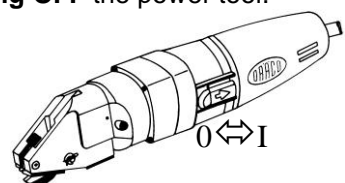


Operating instructions

- Intended use.** This Power Tool is intended for industrial applications, for cutting sheet metal (maximum capacity is indicated in the Specifications), for use with cutting jaws and cutting blades which are indicated in these operating instructions or recommended by DRÄCO.
- Do NOT cut sheet metal along welding points. Do NOT cut multi layer sheets, which exceed the maximum cutting capacity.
- Switching ON/OFF the power tool.** First check cable and plug for damage. Slide the switch pad (5) **BACKWARD** for **switching ON** the power tool. Slide the switch pad (5) **FORWARD** for **switching OFF** the power tool.
- For inside cutting, the shortest curve possible has a radius of 45 mm ($\pm 1\frac{3}{4}$). If cutting a radius with the right hand, cut from right to left. The outside radius is unlimited.
- For **cutting out** curved or circular inside patterns, a 14 mm ($\pm 1/2$ ") hole, or a punched slot should be made to insert the centre cutter.
- If after cutting, a **small strip** remains this can easily be trimmed off to the exact measurement, without leaving a burr or any distortion of the material. Just one side of the power tools can be used for cutting also (e.g. along a marked line). Lift the power tools out of the shavings while the motor is running. Cut off longer shavings.
- Both knife and jaws can be sharpened. After being sharpened or replaced, the knife at it's lowest point should protrude the jaws by approximately 3 mm. The knife should have approximately 0,05 mm (0,005") play on each side of the jaws, centring the cutter with spacing shims supplied.
- Every 200 operating ours have the cutting blade and cutting jaws sharpened at a specialist workshop.
- Ensure that the material to be cut is free of oil and grease.**



Care and Maintenance



Before working on machine disconnect from power supply by removing plug from socket. Always keep the machine and the ventilation slots clean. Oil the knife pin and knife at regular intervals. If the machine should happen to fail despite the care taken in manufacture and testing, repair should be carried out by an authorised customer services agent for DRÄCO power tools

Environmental protection



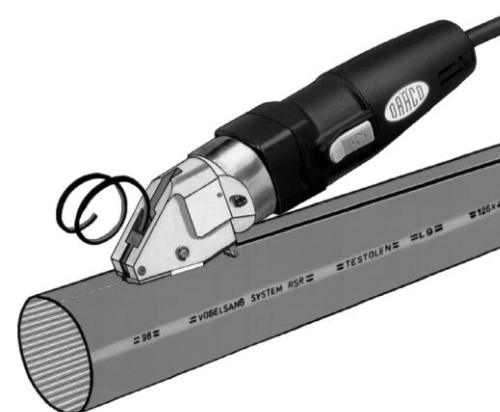
Recycling raw materials instead of waste disposal
Machine, accessories and packaging should be sorted for environment-friendly recycling. These instructions are printed on recycling paper manufactured without chlorine

Warranty

DRÄCO tools carry a guarantee of 12 months from date of delivery. Damage attributable to normal wear and tear, overload or improper handling will be excluded from the guarantee. (e.g. blades/knives and jaws) In case of complaint please send the machine, **undismantled**, to your dealer or the DRÄCO Service Center for electric power tools.

CE-Declaration of Conformity

We declare under our sole responsibility that this product is in conformity with the following standards.
2006/42/EG, 2014/30/EU, EN 60745-2-8:2009, EN ISO 11688-1:2009, EN ISO 12100:2010
CE 2016 Susanne Draenert



Operating Instructions for the Cable Pipe Cutter 3500

To avoid any disturbance please read the following instructions:



1 Safe operation of this machine is possible only when the operating instructions and the safety precautions are read completely and the instructions contained therein are strictly observed.

2 The machine must not be used in a wet environment.

3 Always inspect cable and plug before using machine. Only have damage repaired by a qualified professional. Put the plug into the mains socket only when the machine is switched off.

4+5 Always wears protective goggles, protective gloves and heavy-duty shoes when working.

- Do not carry the machine by the cable.
- Always remove the plug from the power supply socket before carrying out any work on the machine, when interrupting work and when not using the machine.
- Always place the cable to the rear away from the machine.
- Apply the machine to the plastic material only when switched on.
- Always provide for secure footing when working.
- Firmly clamp the work piece if it dose not remain stationary from its own weight.
- The knife should not rub on the jaws: Possible danger of cutting tool breakage.
- Do not exceed the maximum allowable material thickness.

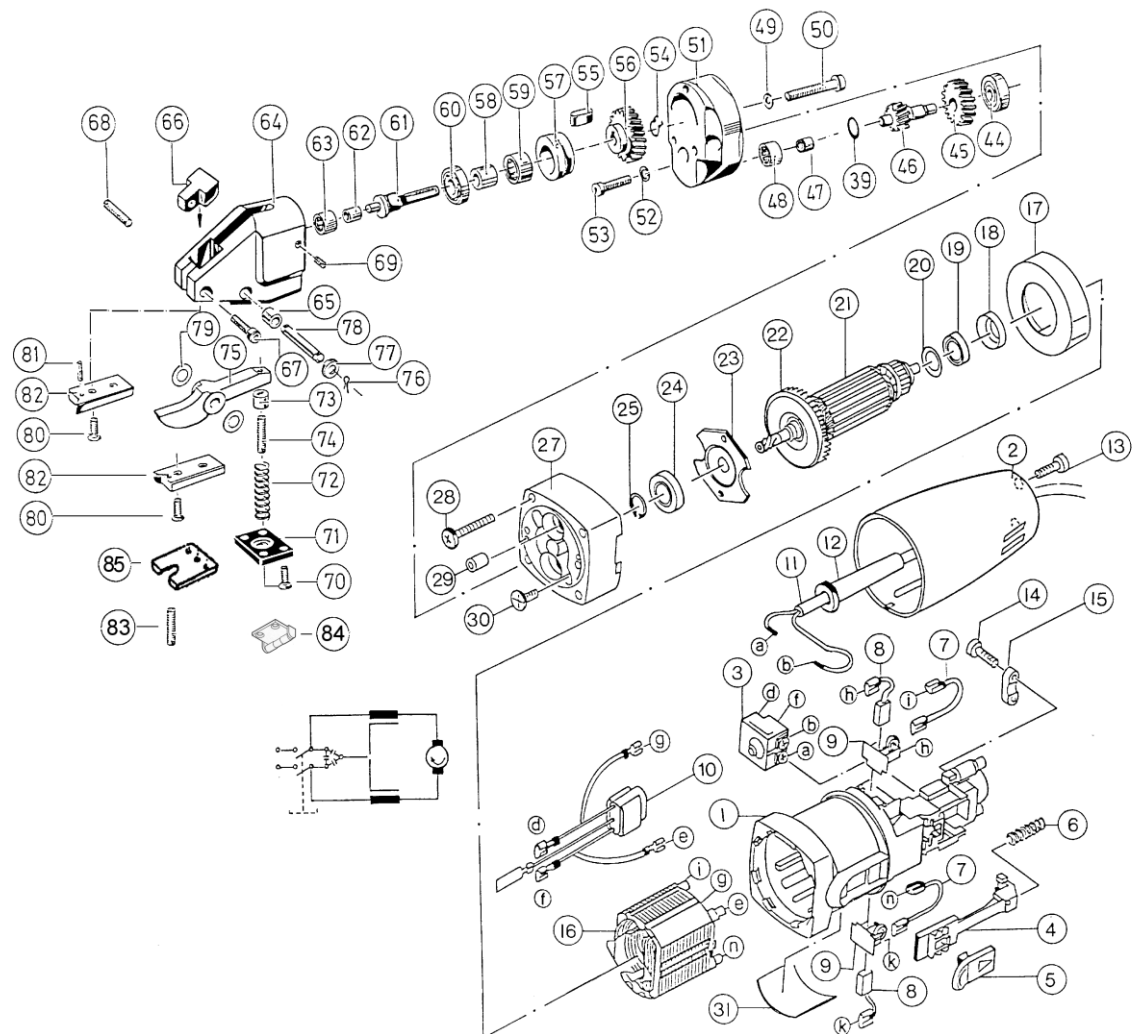


For further notes on safety , we refer to the enclosed red print, safety instruction sheet.

DRÄCO Cable Pipe Cutter		3500
max. cutting capacity	Art.no.	61330
HDPE, Telecom cables	mm	6,0
PVC, ABS, PP, etc.	mm	3,5
Polyester, GFK, Formica, etc.	mm	2,0-3,0
tightest radius	mm	175
working speed	m/min	5
strokes	min ⁻¹	2400
motor capacity	Watt	500
weight	kg	2

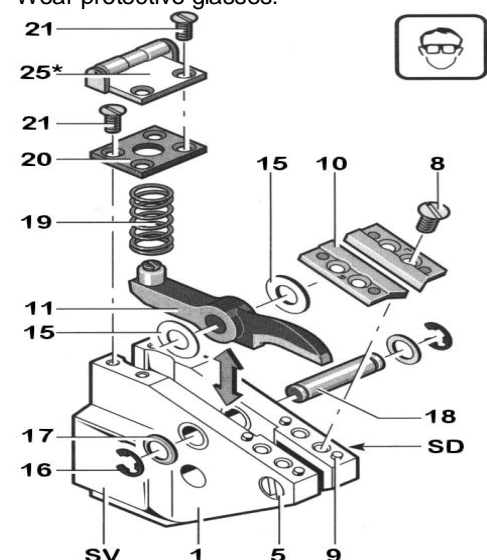
3500 spare parts			
knife	30068	guide pin	30078
set of jaws	30074		
knife-pin set	BG12555		
optional accessories			
metal-box			18000
adjustable guide S/02	up to 100 mm		20062
adjustable guide S/02	up to 250 mm		20063
adjustable guide S/02	up to 500 mm		20064
Stützrolle			10077

Spare Parts for Cable Pipe Cutter 3500



Replacing/Adjusting the Knife

Before working on machine disconnect from power supply by removing plug from socket. Wear protective glasses!



Unscrew the screws 70 and remove the spring plate 71. Remove the spring 72. Remove the Cotter Pin 76 and the Washer 77. Push back the knife pin 78.

⚠ Do NOT interchange the Spacing Shims 79: the wrong spacing could ruin the jaws and knife.
Insert a new knife with the old spacing Shims 79. Insert the knife pin 8. Mount the washer 77 and the Cotter Pin 76. Insert the spring 72. Reassemble spring plate 71.

Replacing the Jaws

Loosen the screws 80 and remove the jaws 82. Press out the positioning pins 81. Mount new jaws and positioning pins. Tighten the screws 80.

Adjusting the knife Clearance

For clearance between knife and jaws that is too large, loosen the fillister head screw 67. Adjust the clearance with the setscrew 68. Retighten the fillister head screw 67.

⚠ The knife must not rub on the jaws: Danger of breakage.
Note: If heavy burring is produced while cutting, repeat the adjustment.

Sharpening the Knife/Jaws

The Knife and the Jaws must be sharpened and adjusted at the same time. This work should be performed by an authorised DRÄCO customer service location. Send in the complete machine for this purpose.

Replacing the Knife

Clamp the machine in a vice on the clamping surfaces SV between aluminium protective jaws.

Spare Parts List for DRÄCO Cable Pipe Cutter 3500

Pos.	Description	Qty.	Order-No.	Pos.	Description	Qty.	Order-No.
	Shearhead 3500 cpl. without Motor		27303	45	Gear	1	13540
				46	Pinion	1	13041
				47	Sleeve	1	13042
				48	Needle bearing	1	13043
54-62	Drive shaft assembled		27202	49	Securing Washer	3	81249
	Pinion with gear cpl Pos 39, 44-48		31541	50	Flat Fillister Head Screw	3	81262
				51	Gear Case Cover Seri F	1	13046
	Motor cpl. 230 V, 60 Hz	1	32229	52	Spring washer	2	81243
	Motor cpl. 115 V, 60 Hz	1	32129	53	Hex Socket Screw	2	81031
1	Motor housing	1	32040	54	Circlip	1	10009
2	Housing Cap	1	32047	55	Key	1	10006
3	Switch	1	32050	56	Gear 36 teeth	1	13051
4	Guide Piece	1	32054	57	Cap for Needle Bearing	1	10450
5	Switch Pad	1	32056	58	Sleeve	1	10005
6	Pressure Spring	1	32055	59	Needle Bearing	1	10300
7	Wire	2	32044	60	Ball bearing	1	13555
8	Carbon Brush Set	2	32042	61	Excentric Drive Shaft	1	13556
9	Carbon Brush Holder	2	32041	62	Sleeve	1	10005
10	Condensator	1	32045	63	Needle Bearing	1	10300
11	Cable with Plug Europe	1	32046	64	Head Casting	1	20501
12	Connection Cable	1	32522	65	Pinbush	2	17900
13	Screw	2	32048	66	Spanführung 7,5 mm	1	10002
14	Screw	2	32053	67	Flat Fillister Head Screw	1	81272
15	Cable Collar	1	32052	68	Spacing setscrew	1	81089
16	Field 230 Volt, 60 Hz	1	32039	69	Tap Screw with ISK	2	81239
16	Field 115 Volt, 60 Hz	1	32139	70	Flat Head Screw	4	81271
17	Air Deflector Ring	1	32038	71	Spring Cover	1	12300
18	Rubber Sleeve	1	32036	72	Spring	1	12200
19	Ball Bearing	1	32030	73	Knife Lock ring	1	12100
				73-74	Knife adjusting screw with adjusting screw	1	12222
20	Washer	1	32037	74	Knife adjusting screw	1	12000
21	Armature 230 Volt, 60 Hz	1	32033	75	Knife	1	30068
21	Armature 115 Volt, 60 Hz	1	32133	76-79	Knife pin set	1	BG12555
23	Bearing Cover	1	32032	76	Circlip	2	81042
24	Ball Bearing	1	10038	77	Washer	2	81072
25	Securing Ring	1	32034	78	Knife pin	1	12500
27	Bearing End Plate	1	32014	79	Spacing Shims Set	1	BG12400
28	Screw	4	32010	80	Spacing Shims	4	81270
29	Pin	1	32043	81	Pin	4	81248
30	Screw	2	32012	82	Set of jaws	1	30074
31	Label	1	32057	83	Guide Pin with slot	1	30078
39	Washer	3	81059	84	Supporting roller in metal	1	10077
44	Ball Bearing	1	13039	85	Aluminum Cover Plate	1	18610

Max Draenert GmbH & Co.KG Electric - Cordless - Pneumatic Tools - Machines Germany

Factory I : Administration D - 73777 Deizisau P.O. Box 1120 Phone + 49 (0) 7153-8217-0
 Manufacturing Shears D - 73779 Deizisau Gutenbergstr. 15-17 Fax + 49 (0) 7153-8217-66
Factory II : Manufacturing Roofing System D - 73779 Deizisau Seewiesenweg 1
 INTERNET <http://www.dracotools.com> E-mail: draenert@dracotools.com