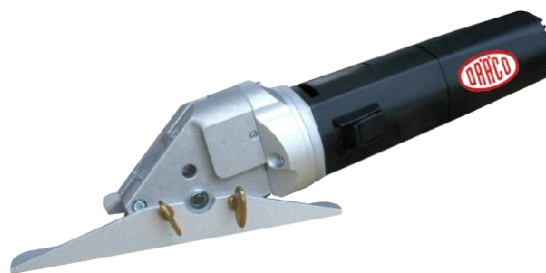




Plastic Shears

# S1002N-1



Side guide for edge trimming inclusive



Slitting of corrugated polyester with optional guide BG20065

### Common features:

■ **Splinter proof cutting of all synthetic resin and laminated plastic-materials:**

Pk-Tex, Textolite, Formica, Perstorp, Ultrapas, Resopal, Celamin, Hornitex, Getalit, Novatex, Thermopal, Tacon, etc. \*\*

■ **Fuzz and dust free cutting**  
Hardboard, Pavatex, Renovite, Karton, Masonit, Silvacolor, Hornitex, Glasal, etc. \*\*

■ **Also:**

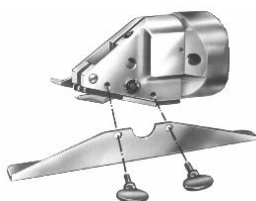
Inlaid, Linoleum, Veneer, etc., Deliflex, Linoleum, Mipolam, PVC, Polyester (dust free!), etc. \*\*

■ flush trimming of projected edges with side guide

■ cutting of strips and edge-bands

■ NO PLEXIGLAS !

- easy, one hand, operation
- simple and safe to use
- insulated and suppressed motor
- accurate cutting along a marked line
- clear view to scribed line or template
- long life tool
- can cause no injury while in motion
- noise under limit
- low maintenance
- knives and jaws can be exchanged or re-sharpened



assembling side guide with two wing screws



set of blocks, for straight cutting of corrugated plastics, BG 20065



adjustable guide for cutting strips or edge-bands



Quick on & off side guide for flush trimming

**Also available:**

- ➔ 18 Volt cordless, type AK 3002 Li-ion
- ➔ Pneumatic, type 1950

DRACO Plastic Shears		S1002N-1	3550
<b>max. cutting capacity</b>	Art.no.	61310-1	61320
Board etc.	mm/ga.	<b>5,0</b>	<b>5,0</b>
PVC, ABS, PP, etc.	mm/ga.	<b>3,0 / 10</b>	<b>3,5 / 9</b>
Polyester, GFK, Formica, etc.	mm/ga.	<b>2,0 / 14</b>	<b>3,0 / 10</b>
Teflon, ABS, GFK, PVC etc.		better with 3550	
tightest radius	mm/°	<b>175 / 7</b>	<b>175 / 7</b>
working speed	m/min	<b>6</b>	<b>0 - 5</b>
strokes	min <sup>-1</sup>	<b>3000</b>	<b>2400</b>
motor capacity	Watts	<b>200</b>	<b>500</b>
weight	kg	<b>1,6</b>	<b>2</b>

S1002N-1 & TYP II		3550	
<b>spare parts</b>		<b>spare parts</b>	
knife	01002	knife	01002
set of jaws	BG20600	set of jaws	BG20601
knife-pin set	BG12555	knife-pin set	BG12555
<b>optional accessories</b>			
metal-box			18000
adjustable guide S/02	up to 100 mm		20062
adjustable guide S/02	up to 250 mm		20063
adjustable guide S/02	up to 500 mm		20064
set of blocks for corrugated plastics			BG20065

all units are ready to use

\*\* Trademarks

BG=Set

other voltages available