



Metal stud- & stainless steel shear / up to 2,3 mm Ideal for UA-profiles and really hard jobs

Common features:

- cuts without distortion or straightening of formed parts
- burr free cutting
- no finishing of the edges is required
- accurate cutting along a marked line
- single-side trimming is possible.
- clear view to scribed line or template
- long life tool
- easy, one hand, operation
- simple and safe to use
- insulated and suppressed motor
- almost no maintenance necessary
- knife and jaws can be reground
- parts are standardized and interchangeable

- no flying sparks!
- no dangerous handling with angle grinders!
- Interior suitable
- accident free!
- noise under limit regulation
- ideal for cutting stainless steel
- high service life
- standard high strength knife

Ideal for:

- reinforcing profiles, C- & CW profiles in the drywall, because soft and low-vibration cutting



- railings, stair construction, Thermo products, chemical and pharmaceutical equipment



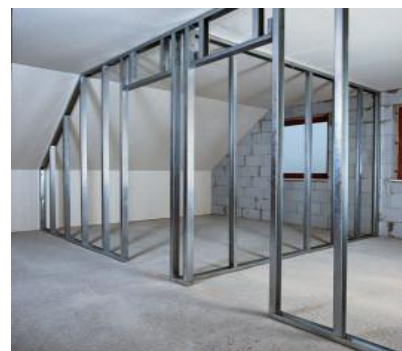
- **Stainless steel machining:** commercial kitchen, food service & catering equipment manufacturing



3515



Dry wall
Metal stud / UA-profiles



Also available:

- cordless, type AK 3515 (12 or 18 Volt)
- pneumatic, type 19/3515



cut-outs from drilled starting holes 12-14mm



cutting of shaped parts

DRACO V2A Metal Shear		3515
max. cutting capacity	Art.nr.	61063
steel	400 N/mm ² mm	2,3
stainless steel	600 N/mm ² mm	1,8
stainless steel	800 N/mm ² mm	1,5
aluminium	250 N/mm ² mm	3,0
tightest radius	mm	200
working speed ±	m/min	5-7
strokes	min ⁻¹	2400
motor capacity	Watt	500
weight	kg	2

all units are ready to use

3515	
spare parts	
knife heavy duty	035151
set of jaws	BG35146
knife-pin set	BG35055
optional accessories	
metal-box	18000
support roller (metal)	BG10077



BG=Set

other voltages available