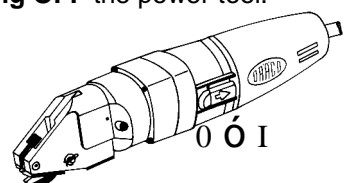


Operating instructions

- Intended use.** This Power Tool is intended for industrial applications, for cutting sheet metal (maximum capacity is indicated in the Specifications), for use with cutting jaws and cutting blades which are indicated in these operating instructions or recommended by DRÄCO.
- Do NOT cut sheet metal along welding points. Do NOT cut multi layer sheets, which exceed the maximum cutting capacity.
- Switching ON/OFF the power tool.** First check cable and plug for damage. Slide the switch pad (5) **BACKWARD** for **switching ON** the power tool. Slide the switch pad (5) **FORWARD** for **switching OFF** the power tool.
- For inside cutting, the shortest curve possible has a radius of 45 mm ($\pm 1\frac{3}{4}$ "). If cutting a radius with the right hand, cut from right to left. The outside radius is unlimited.
- For **cutting out** curved or circular inside patterns, a 14 mm ($\pm 1/2$ ") hole, or a punched slot should be made to insert the centre cutter.
- If after cutting, a **small strip** remains this can easily be trimmed off to the exact measurement, without leaving a burr or any distortion of the material. Just one side of the power tools can be used for cutting also (e.g. along a marked line). Lift the power tools out of the shavings while the motor is running. Cut off longer shavings.
- Both knife and jaws can be sharpened. After being sharpened or replaced, the knife at its lowest point should protrude the jaws by approximately 3 mm. The knife should have approximately 0,05 mm (0,005") play on each side of the jaws, centring the cutter with spacing shims supplied.
- Every 200 operating hours have the cutting blade and cutting jaws sharpened at a specialist workshop.
- Ensure that the material to be cut is free of oil and grease.**



Care and Maintenance



Before working on machine disconnect from power supply by removing plug from socket. Always keep the machine and the ventilation slots clean. Oil the knife pin and knife at regular intervals. If the machine should happen to fail despite the care taken in manufacture and testing, repair should be carried out by an authorised customer services agent for DRÄCO power tools

Environmental protection



Recycling raw materials instead of waste disposal

Machine, accessories and packaging should be sorted for environment-friendly recycling. These instructions are printed on recycling paper manufactured without chlorine

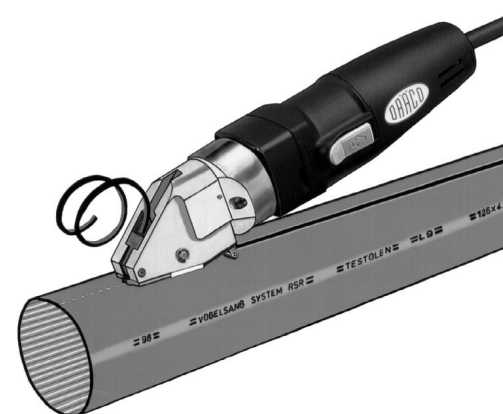
Warranty

DRÄCO tools carry a guarantee of 12 months from date of delivery. Damage attributable to normal wear and tear, overload or improper handling will be excluded from the guarantee. (e.g. blades/knives and jaws) In case of complaint please send the machine, **undismantled**, to your dealer or the DRÄCO Service Center for electric power tools.

CE-Declaration of conformity

We declare under our sole responsibility that this product is in conformity with the following standards. EC 98/37, EC 93/68 EWG, EC 04/108 EC, or standardisation documents DIN EN ISO 12100-1, DIN EN ISO 12100-2, EN 50 144, EN 55 014

CE 09 Max Draenert



Operating Instructions for the Cable Pipe Cutter 3500

To avoid any disturbance please read the following instructions:



1 Safe operation of this machine is possible only when the operating instructions and the safety precautions are read completely and the instructions contained therein are strictly observed.

2 The machine must not be used in a wet environment.

3 Always inspect cable and plug before using machine. Only have damage repaired by a qualified professional. Put the plug into the mains socket only when the machine is switched off.

4+5 Always wears protective goggles, protective gloves and heavy-duty shoes when working.

Do not carry the machine by the cable.

Always remove the plug from the power supply socket before carrying out any work on the machine, when interrupting work and when not using the machine.

Always place the cable to the rear away from the machine.

Apply the machine to the plastic material only when switched on.

Always provide for secure footing when working.

Firmly clamp the work piece if it does not remain stationary from its own weight.

The knife should not rub on the jaws: Possible danger of cutting tool breakage.

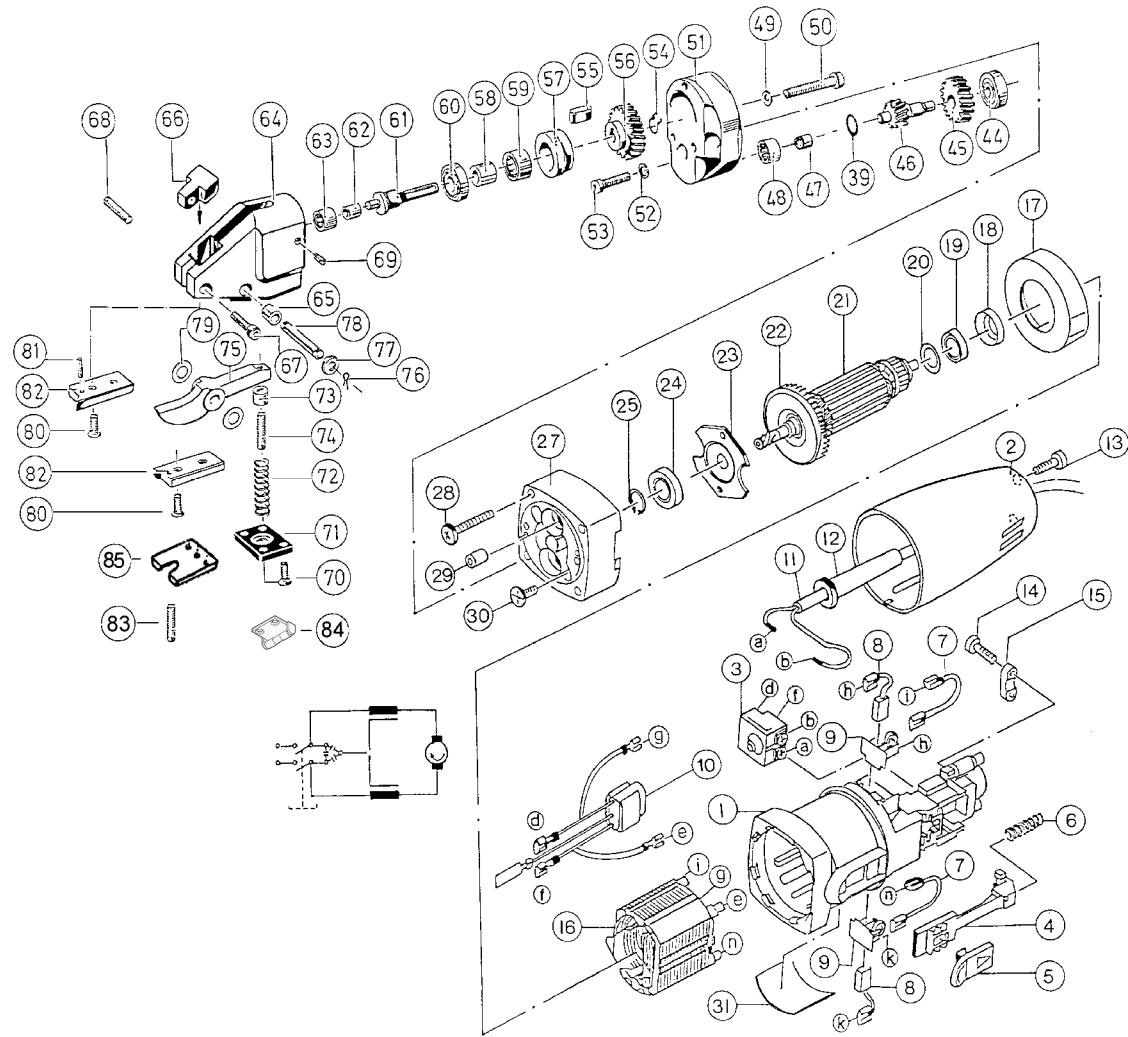
Do not exceed the maximum allowable material thickness.

F For further notes on safety, we refer to the enclosed red print, safety instruction sheet.

DRÄCO Cable Pipe Cutter		3500
max. cutting capacity	Art.no.	61330
HDPE, Telecom cables	mm	6,0
PVC, ABS, PP, etc.	mm	3,5
Polyester, GFK, Formica, etc.	mm	2,0-3,0
tightest radius	mm	175
working speed	m/min	5
strokes	min ⁻¹	2400
motor capacity	Watt	500
weight	kg	2

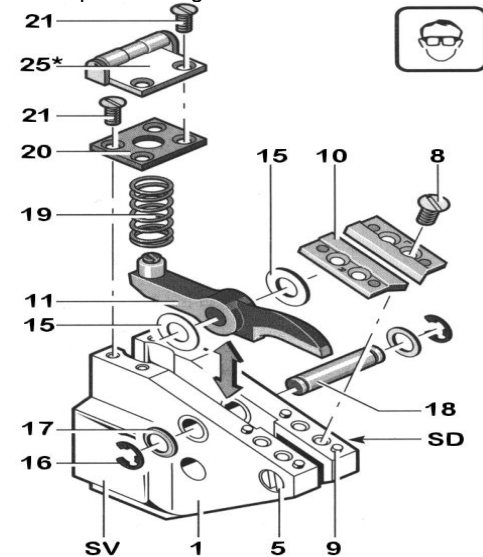
3500 spare parts			
knife	30068	guide pin	30078
set of jaws	30074		
knife-pin set	35149		
optional accessories			
metal-box			18000
adjustable guide S/02	up to 100 mm		20062
adjustable guide S/02	up to 250 mm		20063
adjustable guide S/02	up to 500 mm		20064
Stützrolle			10077

Spare Parts for Cable Pipe Cutter 3500



Replacing/Adjusting the Knife

Before working on machine disconnect from power supply by removing plug from socket. Wear protective glasses!



Replacing the Knife

Clamp the machine in a vice on the clamping surfaces SV between aluminium protective jaws.

Unscrew the screws 70 and remove the spring plate 71. Remove the spring 72. Remove the Cotter Pin 76 and the Washer 77. Push back the knife pin 78.

⚠ Do NOT interchange the Spacing Shims 79: the wrong spacing could ruin the jaws and knife.
Insert a new knife with the old spacing Shims 79. Insert the knife pin 8. Mount the washer 77 and the Cotter Pin 76. Insert the spring 72. Reassemble spring plate 71.

Replacing the Jaws

Loosen the screws 80 and remove the jaws 82. Press out the positioning pins 81. Mount new jaws and positioning pins. Tighten the screws 80.

Adjusting the knife Clearance

For clearance between knife and jaws that is too large, loosen the fillister head screw 67. Adjust the clearance with the setscrew 68. Retighten the fillister head screw 67.

⚠ The knife must not rub on the jaws: Danger of breakage.
Note: If heavy burring is produced while cutting, repeat the adjustment.

Sharpening the Knife/Jaws

The Knife and the Jaws must be sharpened and adjusted at the same time. This work should be performed by an authorised DRÄCO customer service location. Send in the complete machine for this purpose.

Spare Parts List for DRÄCO Cable Pipe Cutter 3500

Pos.	Description	Qty.	Order-No.	Pos.	Description	Qty.	Order-No.
	Shearhead 3500 cpl. without Motor		27303	45	Gear	1	13540
	54-62 Drive shaft assembled		27202	46	Pinion	1	13041
	Pinion with gear cpl Pos 39, 44-48		31541	47	Sleeve	1	13042
	Motor cpl. 230 V, 60 Hz	1	32229	48	Needle bearing	1	13043
	Motor cpl. 115 V, 60 Hz	1	32129	49	Securing Washer	3	81249
1	Motor housing	1	32040	50	Flat Fillister Head Screw	3	81262
2	Housing Cap	1	32047	51	Gear Case Cover Seri F	1	13046
3	Switch	1	32050	52	Spring washer	2	81243
4	Guide Piece	1	32054	53	Hex Socket Screw	2	81031
5	Switch Pad	1	32056	54	Circlip	1	10009
6	Pressure Spring	1	32055	55	Key	1	10006
7	Wire	2	32044	56	Gear 36 teeth	1	13051
8	Carbon Brush Set	2	32042	57	Cap for Needle Bearing	1	10450
9	Carbon Brush Holder	2	32041	58	Sleeve	1	10005
10	Condensator	1	32045	59	Needle Bearing	1	10300
11	Cable with Plug Europe	1	32046	60	Ball bearing	1	13555
12	Connection Cable	1	32522	61	Excentric Drive Shaft	1	13556
13	Screw	2	32048	62	Sleeve	1	10005
14	Screw	2	32053	63	Needle Bearing	1	10300
15	Cable Collar	1	32052	64	Head Casting	1	20501
16	Field 230 Volt, 60 Hz	1	32039	65	Pinbush	2	17900
16	Field 115 Volt, 60 Hz	1	32139	66	Spanführung 7,5 mm	1	10002
17	Air Deflector Ring	1	32038	67	Flat Fillister Head Screw	1	81272
18	Rubber Sleeve	1	32036	68	Spacing setscrew	1	81089
19	Ball Bearing	1	32030	69	Tap Screw with ISK	2	81239
20	Washer	1	32037	70	Flat Head Screw	4	81271
21	Armature 230 Volt, 60 Hz	1	32033	71	Spring Cover	1	12300
21	Armature 115 Volt, 60 Hz	1	32133	72	Spring	1	12200
23	Bearing Cover	1	32032	73	Knife Lock ring	1	12100
24	Ball Bearing	1	10038	73-74	Knife adjusting screw with adjusting screw	1	12222
25	Securing Ring	1	32034	74	Knife adjusting screw	1	12000
27	Bearing End Plate	1	32014	75	Knife	1	30068
28	Screw	4	32010	76-79	Knife pin set	1	BG35055
29	Pin	1	32043	76	Circlip	2	81042
30	Screw	2	32012	77	Washer	2	81072
31	Label	1	32057	78	Knife pin	1	12500
39	Washer	3	81059	79	Spacing Shims Set	1	BG12400
44	Ball Bearing	1	13039	80	Spacing Shims	4	81270
				81	Pin	4	81248
				82	Set of jaws	1	30074
				83	Guide Pin with slot	1	30078
				84	Supporting roller in metal	1	10077
				85	Aluminum Cover Plate	1	18610

Max Draenert GmbH & Co.KG Electric - Cordless - Pneumatic Tools - Machines Germany

Factory I : Administration D - 73777 Deizisau P.O. Box 1120 Phone + 49 (0) 7153-8217-0
 Manufacturing Shears D - 73779 Deizisau Gutenbergstr. 15-17 Fax + 49 (0) 7153-8217-66
Factory II : Manufacturing Roofing System D - 73779 Deizisau Seewiesenweg 1
 INTERNET <http://www.dracotools.com> E-mail: draenert@dracotools.com