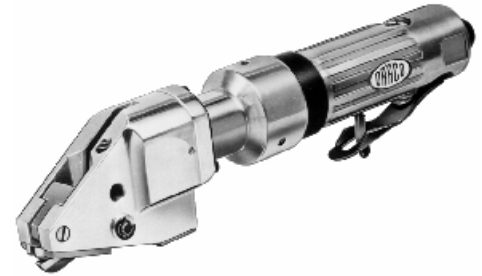
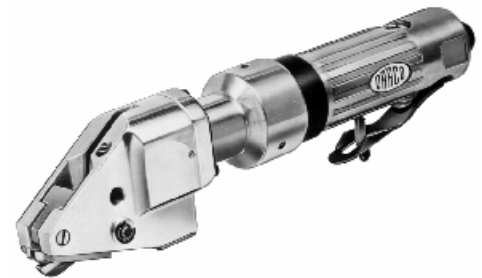


Pneumatic Metal Shears

1810



1813



1820



1810, 1813 & 1820

- cuts without distortion or straightening of formed parts
- burr free cutting
- no finishing of the edges is required
- accurate cutting along a marked line
- single-side trimming is possible
- working speed up to 9 m/min
- cutting of U-, C- and L-profiles
- clear view to scribed line or template
- long life tool
- easy, one hand, operation
- simple and safe to use
- noise under limit
- low air consumption
- ideal for application in hazardous areas

specific 1810:

- short curves possible
- ideal for body-coach workshops
- installation of car sun roofs
- support-roller keeps the shear flat
- also available: electrical SD5, cordless: AK 3010

specific 1813:

- ideal for installation, air conditioning, ducting, aircraft manufacturing
- for application in hazardous (explosive) areas
- ideal for U-, C-, & L-profile cutting
- also available: electrical S1001N, cordless: AK 3013

specific 1820:

- rugged tool for higher cutting capacity
- ideal for U-, C-, & L-profile cutting
- also available: electrical 2020, cordless: AK 3017

ideal for:

- sheet metal workshops
- air conditioning
- control cabinet fabrication
- for application in hazardous (explosive) areas



adjustable guide S/01 for straight cuts



cut-outs from drilled starting hole 10-14mm



cutting of shaped parts

DRÄCO Metal Shears		type	1810	1813	1820
max. cutting capacity		Art.no.:	62030	62040	62050
steel	400 N/mm ²	mm/ga.	1,0/19	1,3/18	2,0/14
stainl. steel	600 N/mm ²	mm/ga.	0,7/21	1,0/19	1,5/17
stainl. steel	800 N/mm ²	mm/ga.	0,4/24	0,7/21	1,3/18
aluminium	250 N/mm ²	mm/ga.	1,5/18	2,0/14	3,0/10
tightest radius		mm/ °	50/2	100/4	200/8
working speed		m/min	9	9	9
strokes		min ⁻¹	3000	3000	3000
air-consumption at 6 bar/min.		m ³ ±	0,18	0,18	0,18
motor capacity		Watts	200	200	200
weight		kg	1,3	1,3	1,3
noise		db(A)	99	99	99

all units are ready to use

spare parts	1810	1813	1820
knife	01011	01001	010135
set of jaws	BG13574/1	BG10600	BG13574
knife-pin set	BG12555	BG12555	BG12555
optional accessories			
adjustable guide S/01	up to 100 mm		10059
adjustable guide S/01	up to 250 mm		10060
adjustable guide S/01	up to 500 mm		10061
support roller (plastic)			BG10076
support roller (metal)			BG10077

BG=Set